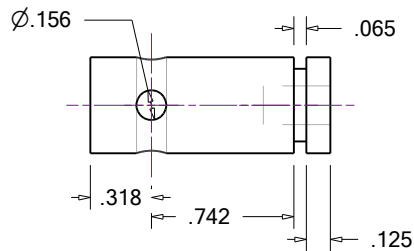
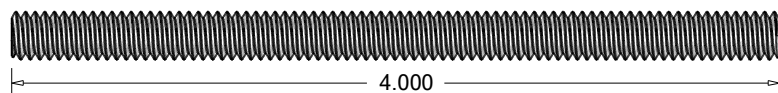
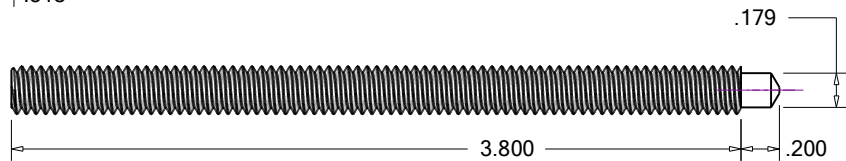
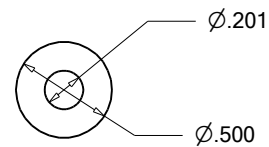
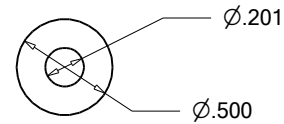
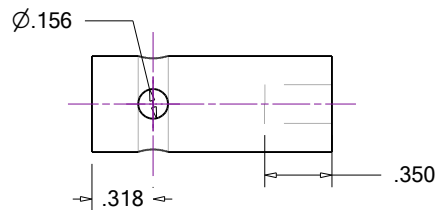


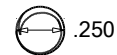
Item Number	Quantity	Part Number	Part Name	Revision	Comment
1	1		ThumbKnob_3_5_Plain		
2	1	1/4-20 AllTread_4inLongFT	1_4-20 AllTread_4inLongFT_3_5		
3	1		ThumbKnob_3_5_Ringed		
4	1	1/4-20 AllTread_4inLongFT	1_4-20 AllTread_4inLongFT_mod		



Both thumb knobs are knurled brass.



.156 are thru holes for Tommy Bars.
.201 are tapped 1/4-20.
Both threaded rods are from Allthread 1/4-20



Clamp_3_5	
All Parts	
02/05/2025	JR