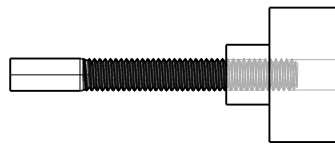
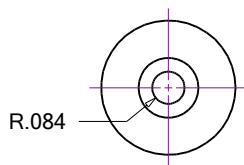


Brass Knurled Knob.  
Thru Hole is .159 for 10-32 thread.



Stud can be 10-32 SHCS with the head removed or a length of 10-32 all thread with one end turned down to remove entire thread depth. Exact diameter is not critical. Multiple studs may be made for different applications.



Both parts above shown Assembled.

ViseStop	
StopPin_Knob	
03/18/2025	JR