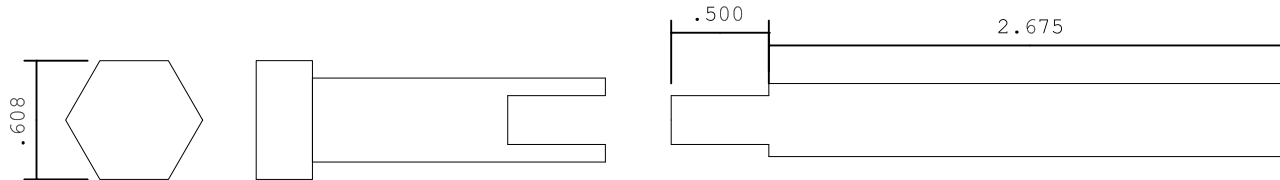


Design for short MT1 Taper

Stock size is 3/8" steel rod.
Rod is turned down to .330 for
clearance within the spindle.

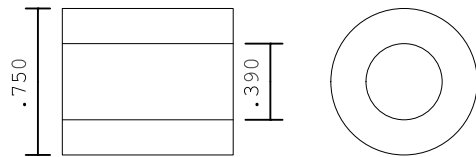


Design for long MT1 Taper

7/16-20 Hex Bolt. Grade 5

3/8" steel rod may be hot or cold rolled

Assembly note.
Use Loctite to secure the rod to the bolt.
Solder could also be used.



Brass or steel with 7/16-20 thread.
This will be held in the lathe chuck.
Use a 7/16-20 nut for a clamp.

This part will allow the MT1 taper in the Sherline
lathe or mill to be released without using a hammer.
In my mill and lathe the taper tools all exhibit a
very strong hold and I do not like having to "ram"
the tools out of the spindle.