

Double Taper Flange Mounted Collet Arbors

POS-A-LOCK®

Stocked Size Range: .044" to 7.00" dia.
 Max. Expansion: .006" to .030"
 Repeatability: .0005" T.I.R.
 Actuating Force: 1400 - 20,000 lbs.

Application:

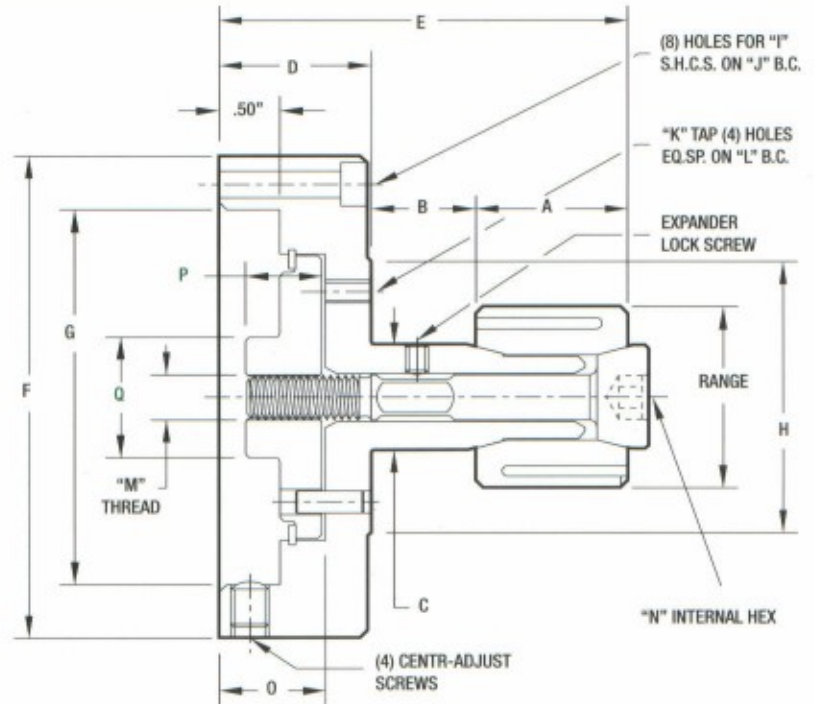
- Used extensively for parts with longer bores or stepped internal diameters.
- Collets tend to conform to slightly tapered bores.
- Ideal for gripping into blind bores.
- Pull back action provides positive location of the workpiece against the work stop.
- Work stops are designed for individual applications.

Power Series: ACFPDI

Drawbar Actuation

Manual Series: ACFMDI

Manual Actuation



POWER MANUAL	RANGE	MAXIMUM EXPANSION	A	B	C	D	E	F	G	H	I	J	K	L	M	N	O	P	Q
-----------------	-------	----------------------	---	---	---	---	---	---	---	---	---	---	---	---	---	---	---	---	---

4.00 FLANGE ASSEMBLIES

4-ACFPDI-1	.44-1.00"	0.010	0.62	0.62	0.437	1.25	2.58	4.00	3.110	2.25	#10	3.531	#10-32	1.750	#10-32	0.156	0.88	0.62	1.00
4-ACFPDI-2	.62-1.25"	0.016	1.00	0.68	0.562	1.25	3.01	4.00	3.110	2.25	#10	3.531	#10-32	1.750	.250-28	0.187	0.88	0.62	1.00
4-ACFPDI-3	.75-1.50"	0.017	1.12	0.80	0.687	1.25	3.30	4.00	3.110	2.25	#10	3.531	#10-32	1.750	.312-24	0.250	0.88	0.62	1.00
4-ACFPDI-4	.94-2.00"	0.020	1.25	0.86	0.875	1.25	3.48	4.00	3.110	2.25	#10	3.531	#10-32	1.750	.375-24	0.312	0.88	0.62	1.00
4-ACFPDI-5	1.38-3.00"	0.025	1.50	1.12	1.250	1.25	3.98	4.00	3.110	3.25	#10	3.531	.250-20	2.750	.500-20	0.375	0.88	0.62	1.00
4-ACFPDI-6	1.56-4.25"	0.031	2.00	1.26	1.500	1.25	4.73	4.00	3.110	3.25	#10	3.531	.250-20	2.750	.625-18	0.500	0.88	0.62	1.00

6.50 FLANGE ASSEMBLIES

6-ACFPDI-1	.44-1.00"	0.010	0.62	0.62	0.437	1.25	2.58	6.50	5.360	2.25	.31	5.875	#10-32	1.750	#10-32	0.156	0.88	0.62	1.00
6-ACFPDI-2	.62-1.25"	0.016	1.00	0.68	0.562	1.25	3.01	6.50	5.360	2.25	.31	5.875	#10-32	1.750	.250-28	0.187	0.88	0.62	1.00
6-ACFPDI-3	.75-1.50"	0.017	1.12	0.80	0.687	1.25	3.30	6.50	5.360	2.25	.31	5.875	#10-32	1.750	.312-24	0.250	0.88	0.62	1.00
6-ACFPDI-4	.94-2.00"	0.020	1.25	0.86	0.875	1.25	3.48	6.50	5.360	2.25	.31	5.875	#10-32	1.750	.375-24	0.312	0.88	0.62	1.00
6-ACFPDI-5	1.38-3.00"	0.025	1.50	1.12	1.250	1.25	3.98	6.50	5.360	3.25	.31	5.875	.250-20	2.750	.500-20	0.375	0.88	0.62	1.00
6-ACFPDI-6	1.56-4.25"	0.031	2.00	1.26	1.500	1.25	4.73	6.50	5.360	3.25	.31	5.875	.250-20	2.750	.625-18	0.500	0.88	0.62	1.00
6-ACFPDI-7	2.50-5.00"	0.035	3.00	1.38	2.250	1.62	6.12	6.50	5.360	5.00	.31	5.875	.375-16	4.000	.750-16	0.625	1.12	1.25	2.00
6-ACFPDI-8	3.00-7.00"	0.042	4.00	1.50	2.750	1.62	7.25	6.50	5.360	5.00	.31	5.875	.375-16	4.000	1.000-14	0.750	1.12	1.25	2.00