

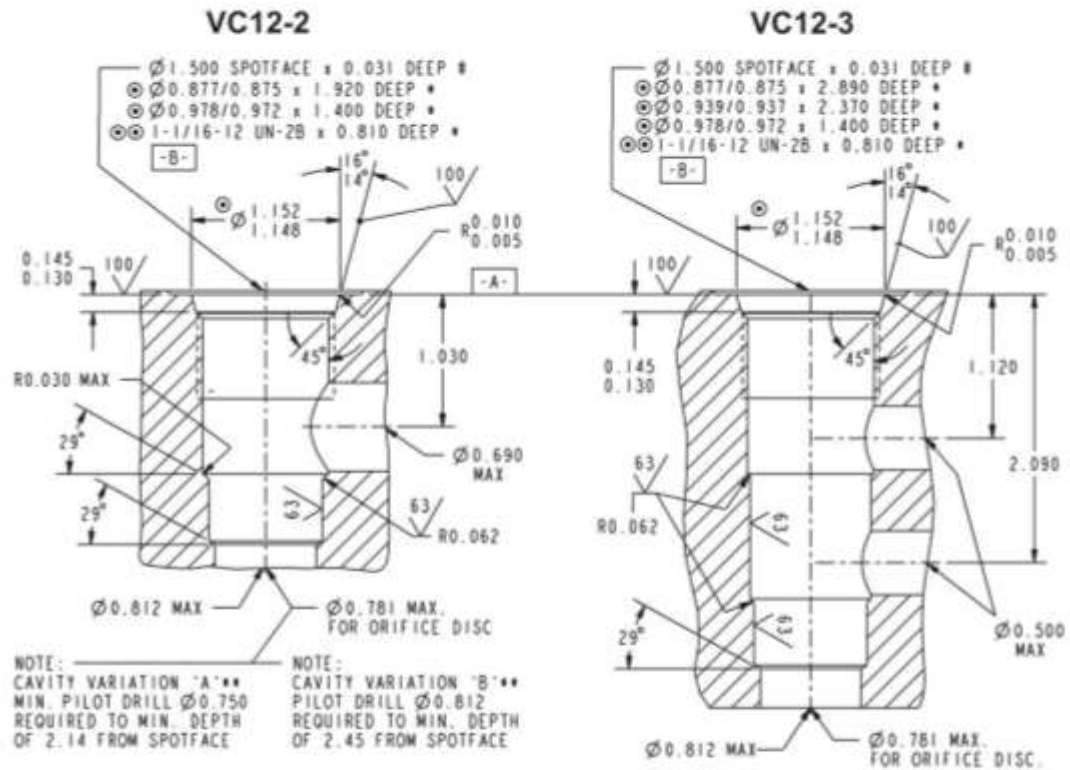
# Series 12 Cartridge Cavities

Saturday, August 11, 2007

12:12 AM

TECHNICAL REFERENCE

**Series 12 Cartridge Cavities**



**NOTES:**

- THE ABOVE FEATURES (EXCEPT FOR PILOT DRILL AND CROSS DRILLS) CAN BE MACHINED SIMULTANEOUSLY USING HYDRAFORCE FORM TOOLS. CONSULT FACTORY.

⊙	0.001	A	⊙⊙	0.001	A
⊙	0.002	B	⊙	0.0009	(PITCH DIA)

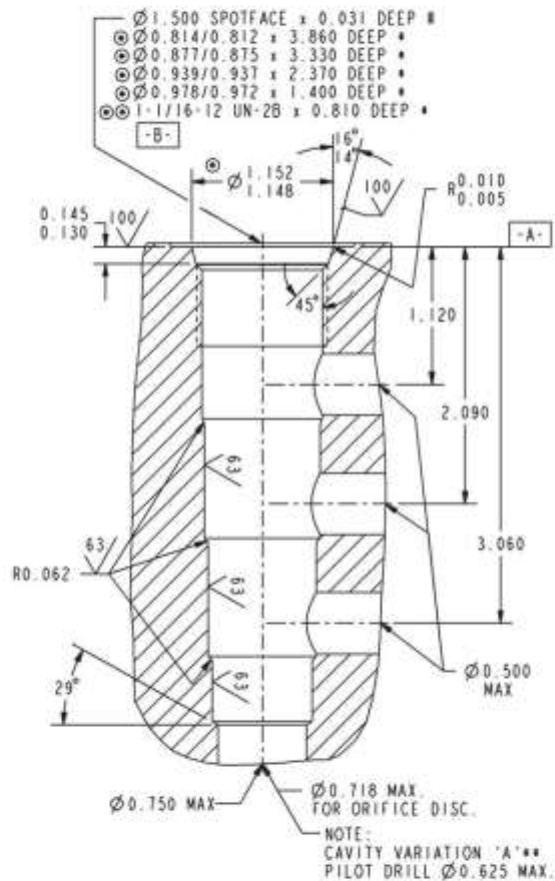
- \* - DEPTHS ARE FROM DATUM -A-
- # - UNLESS OTHERWISE SPECIFIED ON MACHINING DRAWING.
- UNSPECIFIED TOLERANCES ARE ±0.005.
- UNSPECIFIED ANGULAR DIMENSIONS ±3°.
- \*\* - FEATURES OF VARIATION "A" AND "B" ARE ONLY REQUIRED IF NOTED ON A SPECIFIC PRODUCT CATALOG PAGE.



## TECHNICAL REFERENCE

### Series 12 Cartridge Cavities

#### VC12-4



NOTES: - THE ABOVE FEATURES (EXCEPT FOR PILOT DRILL AND CROSS DRILLS) CAN BE MACHINED SIMULTANEOUSLY USING HYDRAFORCE FORM TOOLS. CONSULT FACTORY.

$\text{A}$  - 

0.001	A
0.002	B

 $\text{A}$  - 

0.001	A
0.0009	(PITCH DIA)

\* - DEPTHS ARE FROM DATUM -A-

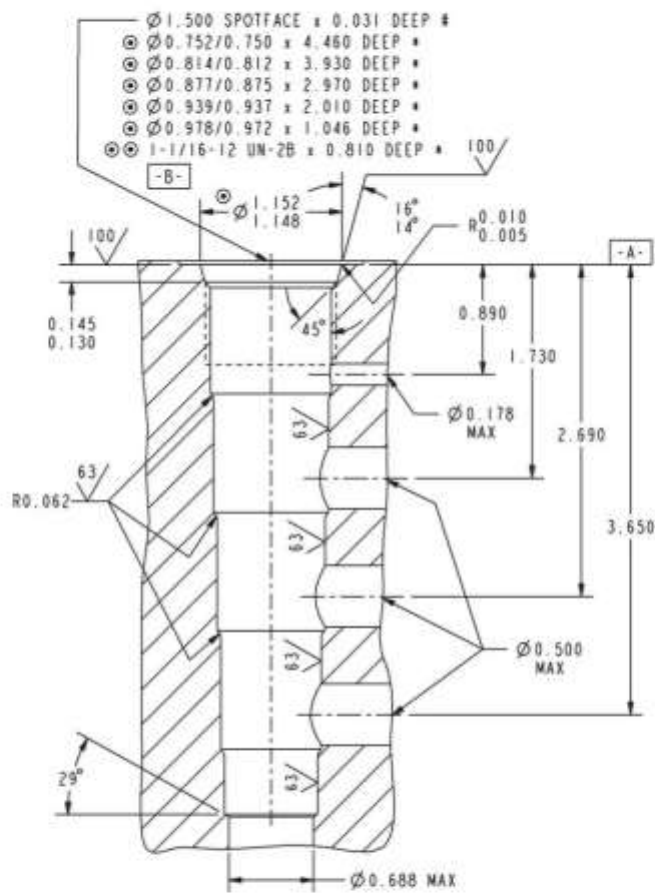
# - UNLESS OTHERWISE SPECIFIED ON MACHINING DRAWING.

- UNSPECIFIED TOLERANCES ARE  $\pm 0.005$ . - UNSPECIFIED ANGULAR DIMENSIONS  $\pm 3^\circ$ .

\*\* - FEATURES OF VARIATION 'A' ARE ONLY REQUIRED IF NOTED ON A SPECIFIC PRODUCT CATALOG PAGE.

**Series 12 Cartridge Cavities**

**VC12-S5**



NOTES: - THE ABOVE FEATURES (EXCEPT FOR PILOT DRILL AND CROSS DRILLS) CAN BE MACHINED SIMULTANEOUSLY USING HYDRAFORCE FORM TOOLS. CONSULT FACTORY.

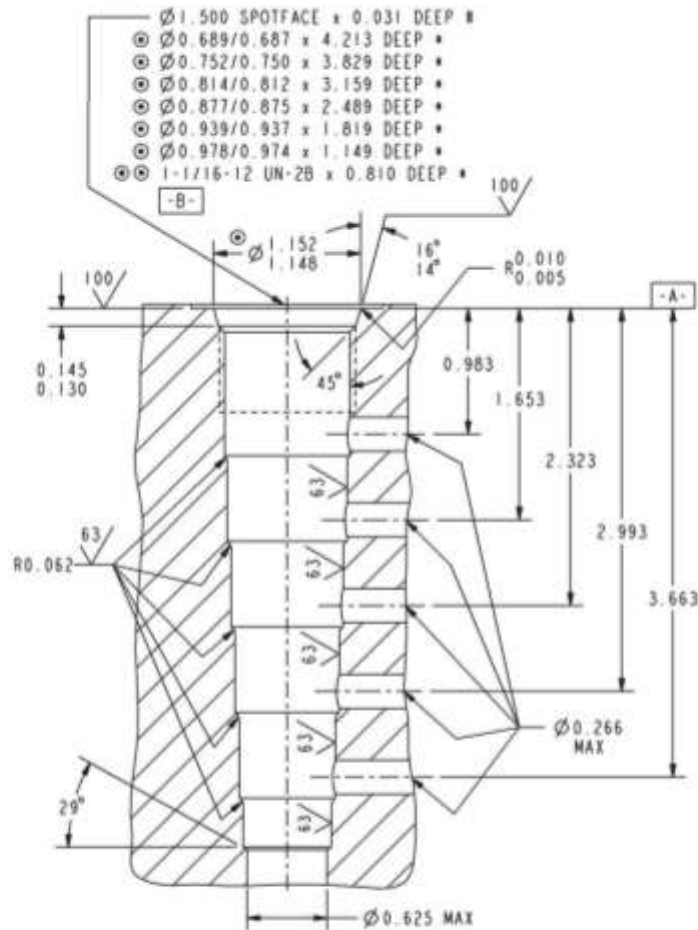
$\varnothing$	0.001	A	$\varnothing$	0.001	A
$\nabla$	0.002	B	$\odot$	0.0009	(PITCH DIA)

- \* - DEPTHS ARE FROM DATUM -A-
- \* - UNLESS OTHERWISE SPECIFIED ON MACHINING DRAWING.
- UNSPECIFIED TOLERANCES ARE  $\pm 0.005$ . - UNSPECIFIED ANGULAR DIMENSIONS  $\pm 3^\circ$ .

TECHNICAL REFERENCE

**Series 12 Cartridge Cavities**

**VC12-6**



NOTES: - THE ABOVE FEATURES (EXCEPT FOR PILOT DRILL AND CROSS DRILLS) CAN BE MACHINED SIMULTANEOUSLY USING HYDRAFORCE FORM TOOLS. CONSULT FACTORY.

$\textcircled{*}$  - 

0.001	A
0.002	B

 $\textcircled{\textcircled{*}}$  - 

0.001	A
0.0009	(PITCH DIA)

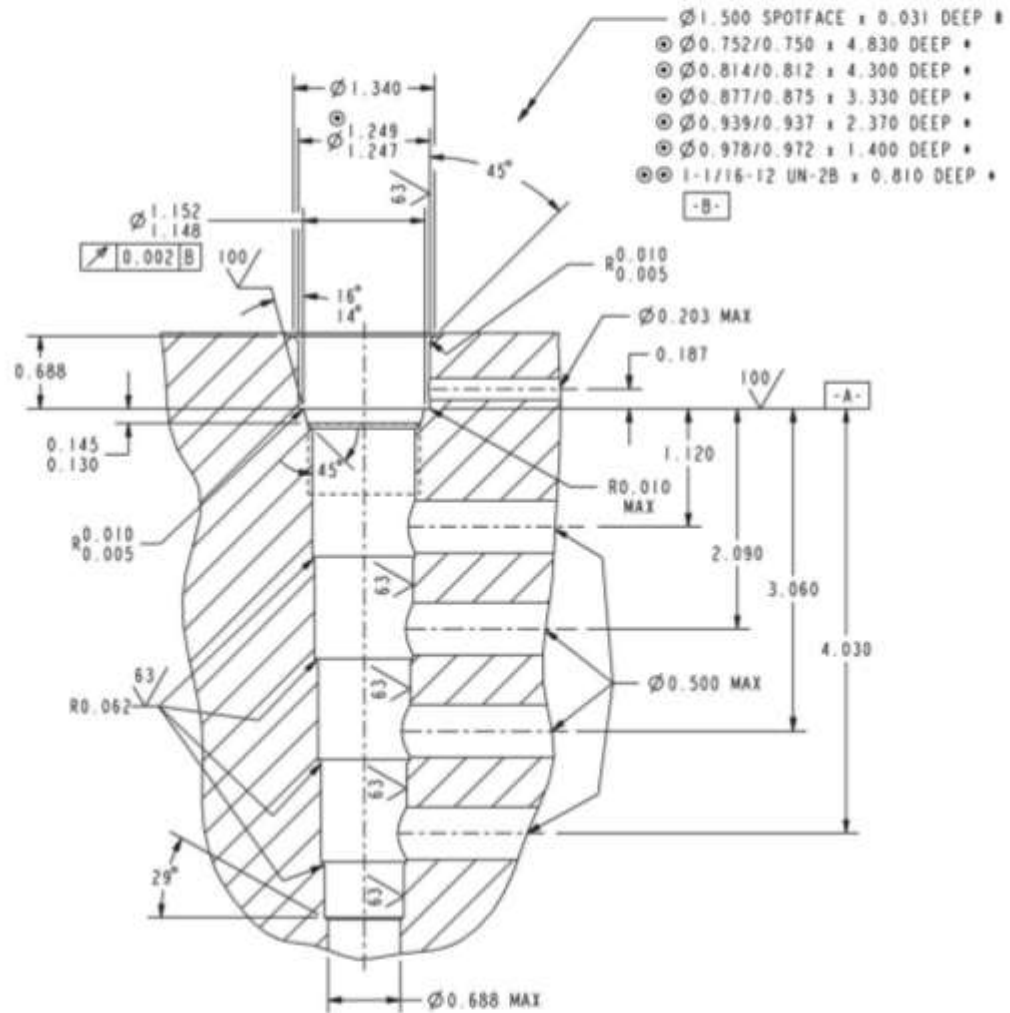
\* - DEPTHS ARE FROM DATUM -A-.

# - UNLESS OTHERWISE SPECIFIED ON MACHINING DRAWING.

- UNSPECIFIED TOLERANCES ARE  $\pm 0.005$ . - UNSPECIFIED ANGULAR DIMENSIONS  $\pm 3^\circ$ .

## Series 12 Cartridge Cavities

### VC12-S6



NOTES: - THE ABOVE FEATURES (EXCEPT FOR PILOT DRILL AND CROSS DRILLS) CAN BE MACHINED SIMULTANEOUSLY USING HYDRAFORCE FORM TOOLS. CONSULT FACTORY.

$\text{Ⓢ}$  -  $\begin{array}{|c|c|c|} \hline 0.001 & A & \\ \hline \text{Surface Finish} & & \\ \hline \end{array}$       $\text{Ⓢ}$  -  $\begin{array}{|c|c|c|} \hline 0.001 & A & \\ \hline \text{Pitch Dia} & & \\ \hline \end{array}$  (PITCH DIA)  
 $\text{Ⓢ}$  -  $\begin{array}{|c|c|c|} \hline 0.002 & B & \\ \hline \text{Surface Finish} & & \\ \hline \end{array}$

\* - DEPTHS ARE FROM DATUM -A-

# - UNLESS OTHERWISE SPECIFIED ON MACHINING DRAWING.

- UNSPECIFIED TOLERANCES ARE  $\pm 0.005$ . - UNSPECIFIED ANGULAR DIMENSIONS  $\pm 3^\circ$ .